

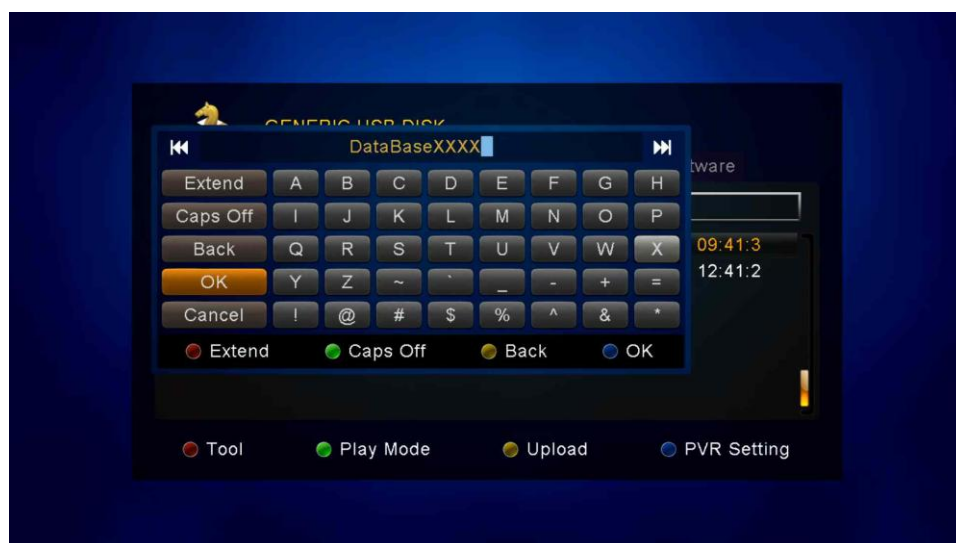
Channel Editor user's manual.

Only for models:

Opticum HD X405p

Opticum HD X406p

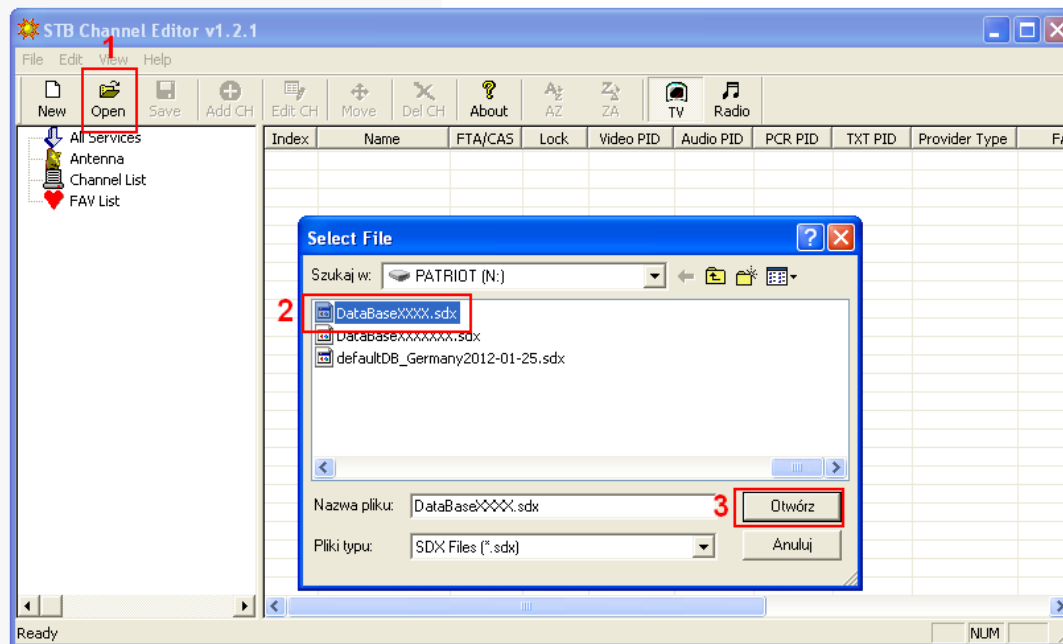
1. To upload channels list from receiver to your PC, press **USB** button on remote, press **yellow** button, choose **Upload Data to USB**. Input name of file. Press **BLUE** button, to save file on USB.



Now you can exit, check that your file will appear on USB device. Disconnect USB and connect it to PC.

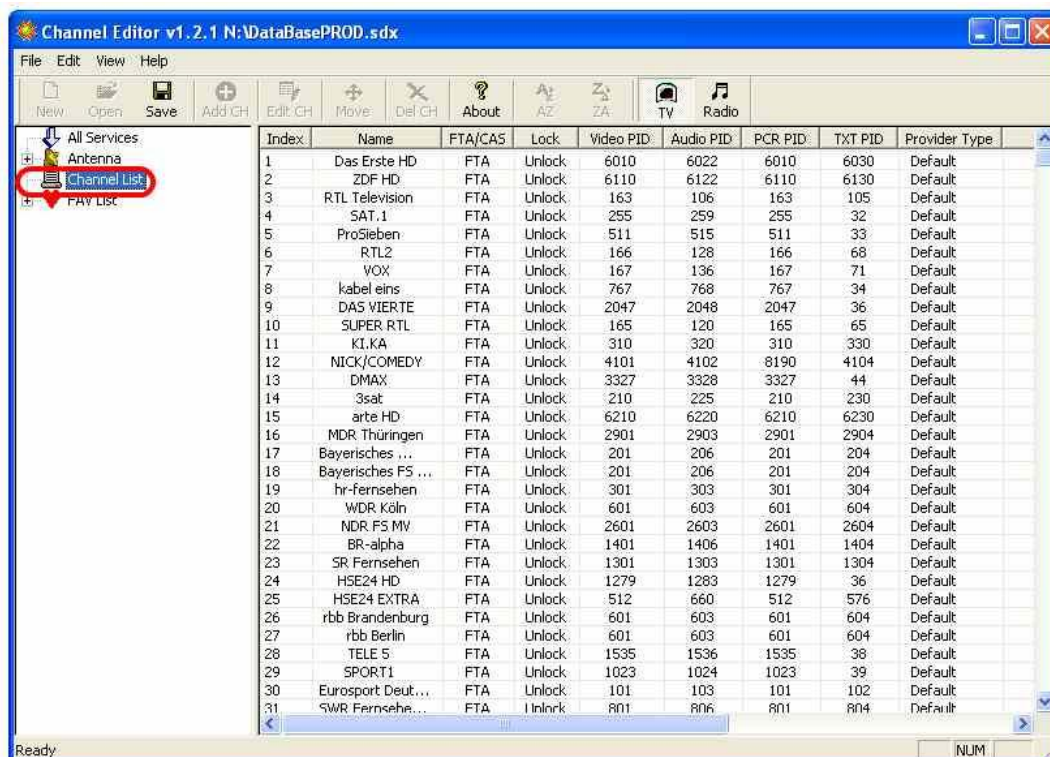
In this way receiver will save USER database- it is your current channel list, which is visible under OK button. Together with main channels list also Favourite channels list and all settings are saved. In case you use channel list from internet, setting of satellites and languages can be different then your setting. You might need to set antenna and other settings again.

2. Open program X405_X406_channel_listEditor.exe

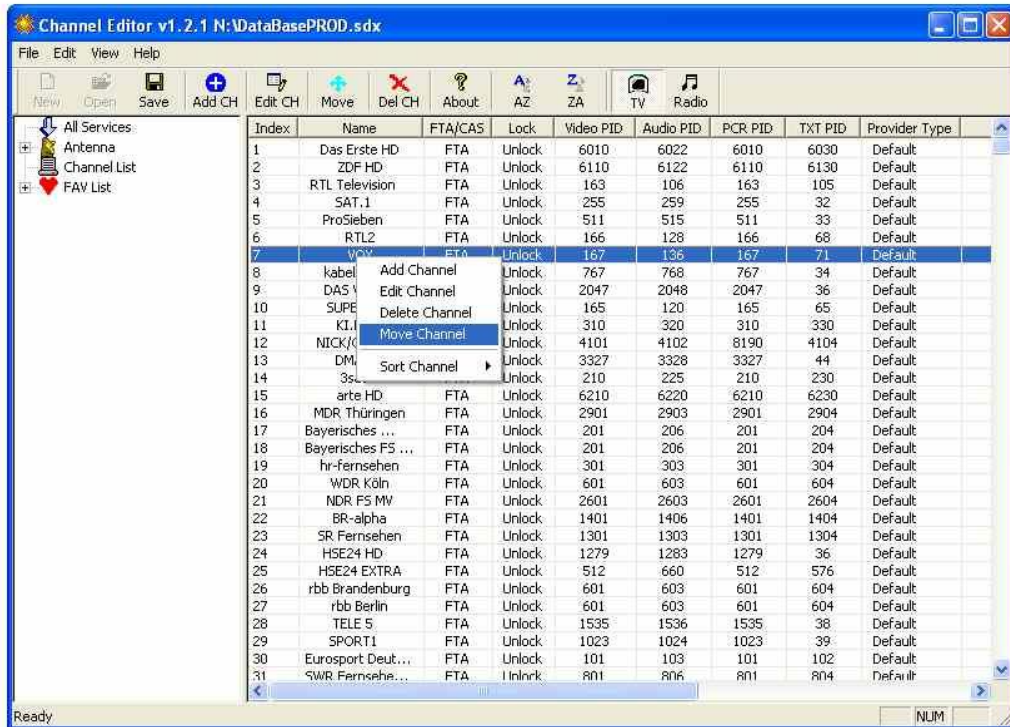


Press open, button.

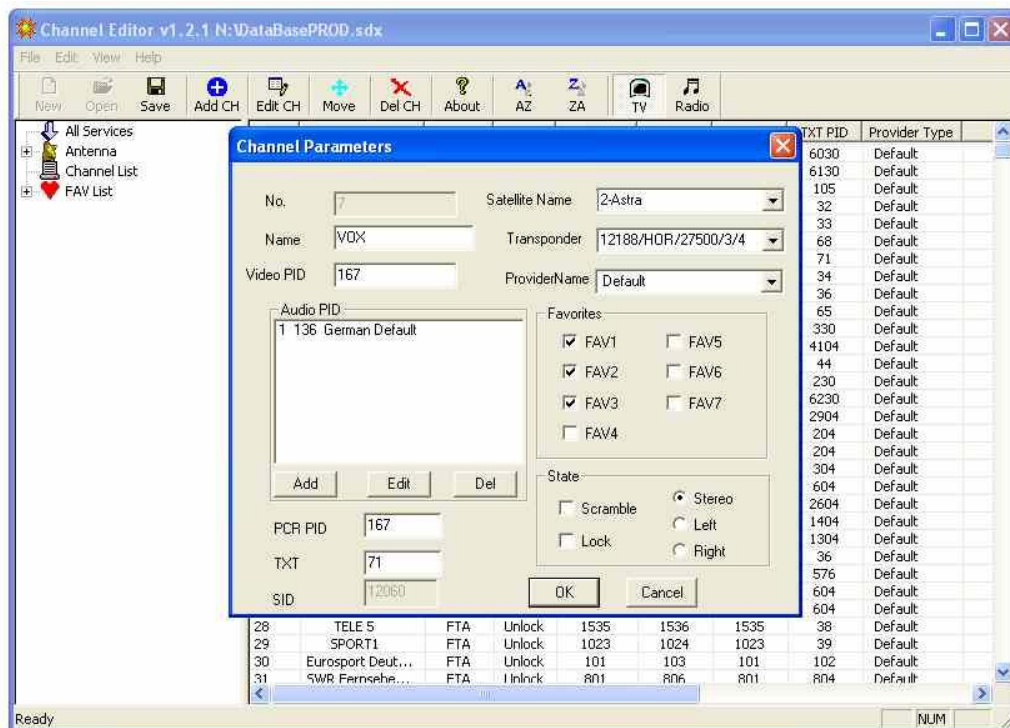
3. Press challes list on the left side to see your channels list



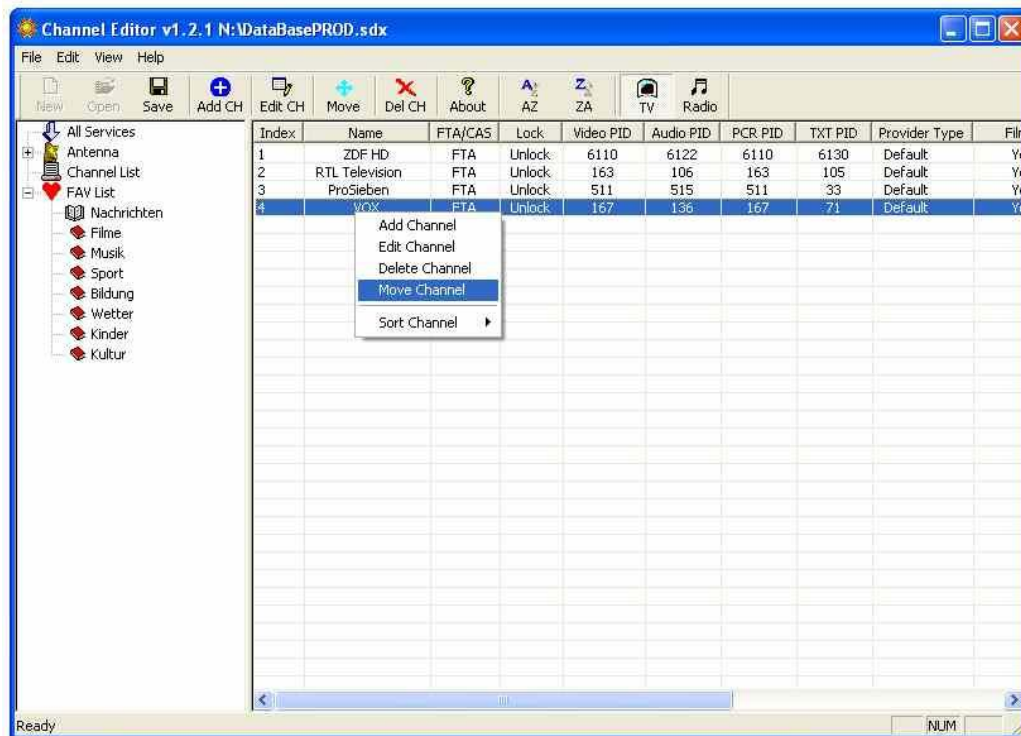
4. You can modify your channels list, click right mouse key to see edit options



5. You can **double click with mouse** on channels to edit channels parameter and add it to favorites groups.



6. To modify order inside of channels list, first add channels to favoute lists, then press FAV List on the left side, and choose FAV list you want to edit. Pless right key mouse to move channels.



7. Save file . copy it to USB, connect USB to receiver.
8. In receiver, press **USB** button on remote, choose your file, press **OK** on it, there will be displayed pop-up message to confirm channels list update. Choose **YES** to start upgrade. Exit from USB, new channels list will be available directly.